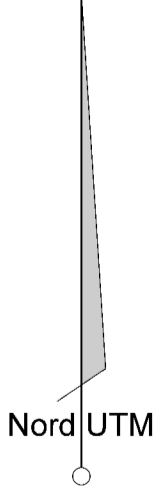




4790,000

4789,500



Rio de la Chantilly

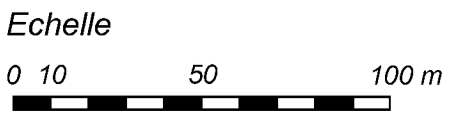
-285 m

R.1.5  
R.2

-304 m

Rio Eulogio

**Topographie : S.C. Dijon 1995 à 2005**  
 (D. Boibessot, Ph. Brenu, S. Collomb Gros, P. et S. Degouve,  
 Ch. et P. Durllet, D. Edo Teys, L. Garnier, P. Giboudeau, A. et L. Guillon,  
 L. Guillot, F. Jovignot, B. et J. Lips, G. Marbach, Ch. Nykiel, J. Palissot,  
 J.F. Ray, G. Simannot, P. Sologny, L. Thierry, S. Tripoli, Y. Tual)



445,500

446,000

Echelle